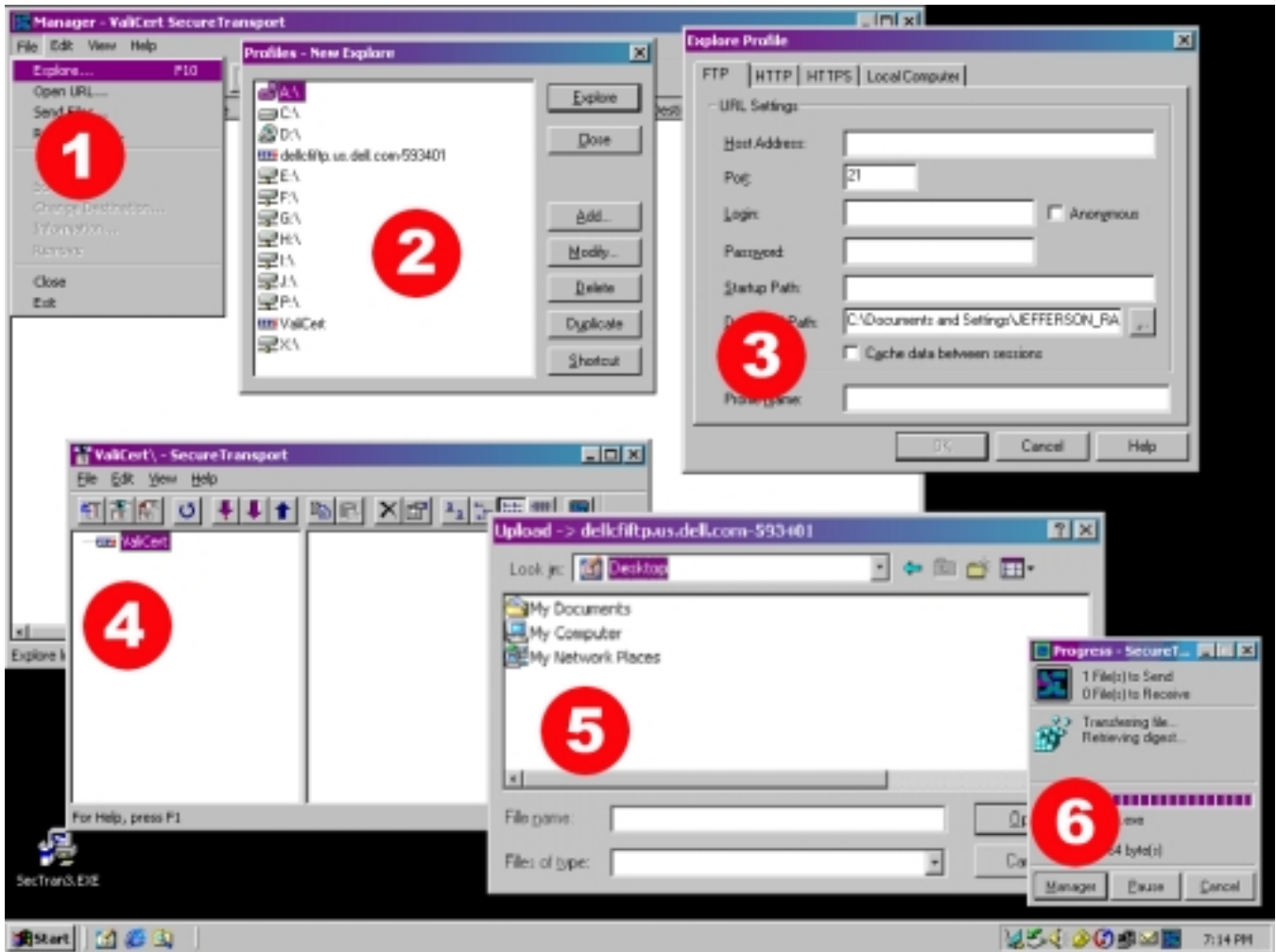


# DOCIT

## Quick User Guide for SecureTransport FTP

Call 877-889-7911 for Technical Support



A) Download

SecureTransport

B) Install SecureTransport

C) Start SecureTransport

1) Click File → Explore

2) Click Add

3) Enter host login and password and click OK

4) Click File → Upload

5) Select your image file and click Open

6) Progress window will show activity as the file is moved.

Created by Dell Custom Factory Integration

Copyright © 2001 Dell

## Introduction

---

What is Secure Transport?

Dell provides the Valicert SecureTransport FTP client free of charge to customers using our Custom Factory Integration services.

SecureTransport contains robust autoresume and guaranteed file delivery features.

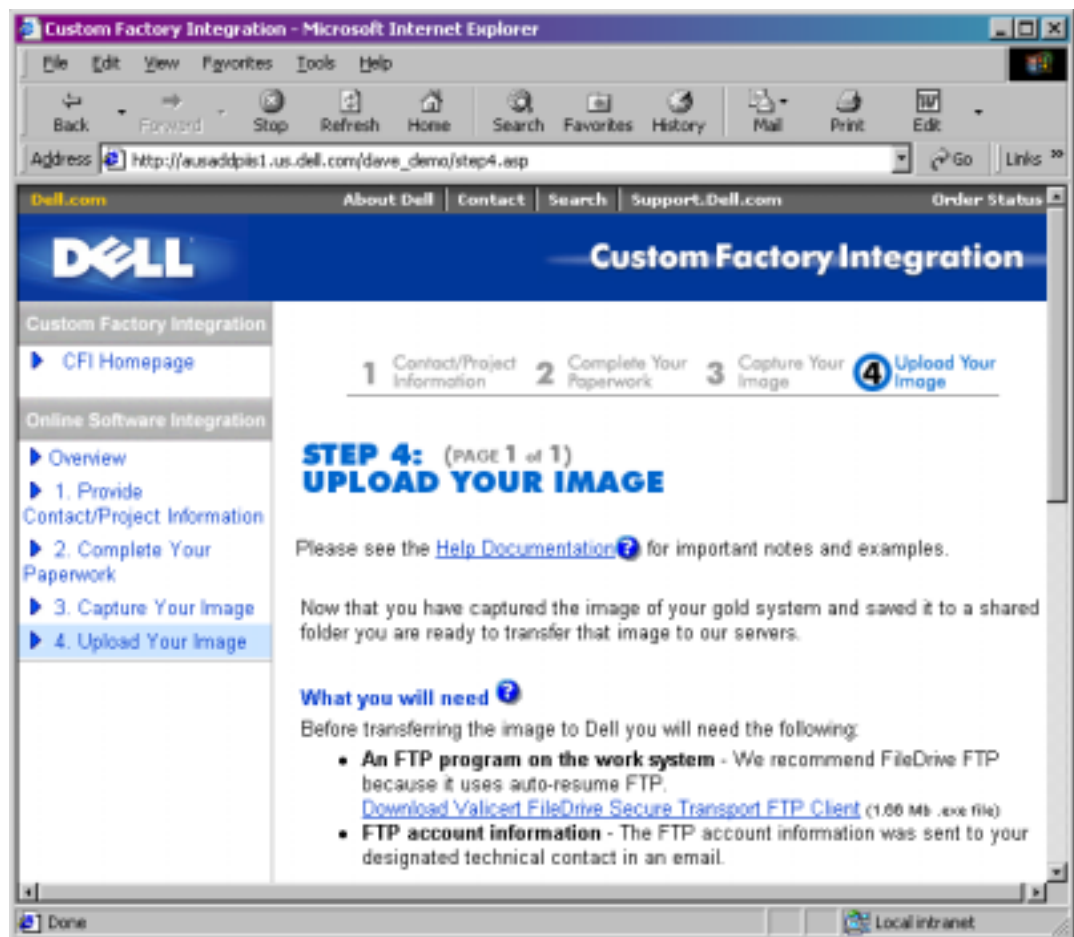
You can download SecureTransport from DOCIT or support.dell.com. Instructions for downloading from DOCIT are below.

---

## Downloading Valicert SecureTransport from DOCIT

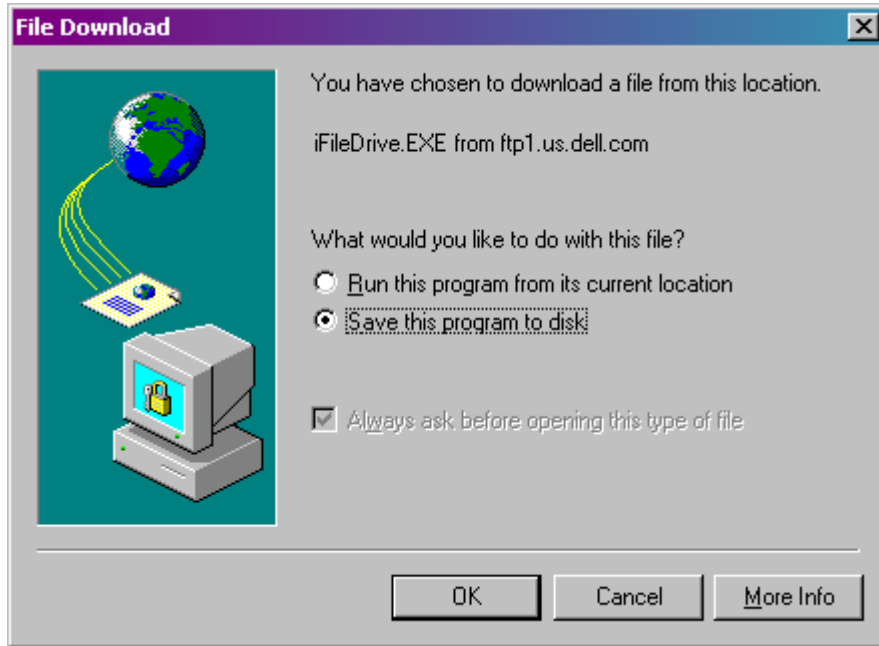
---

**Click the “Download Valicert FileDrive Secure Transport FTP Client” link**

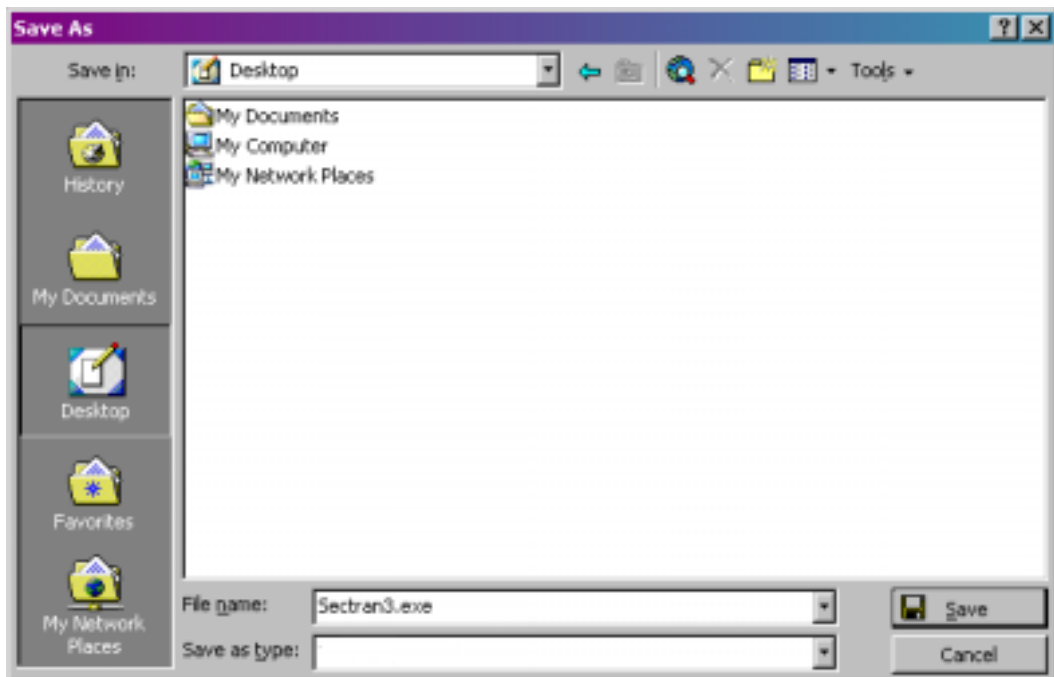


When you select the link to download Secure Transport, you may see this screen.

**Select “Save the program to disk” and click the OK button**



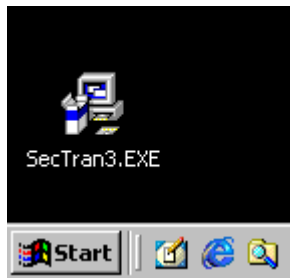
**Save the file to your desktop. Click the Save button**



## Installing Valicert SecureTransport

---

**Go to your desktop and double-click SecTran.EXE.**



The SecureTransport installation wizard will open.

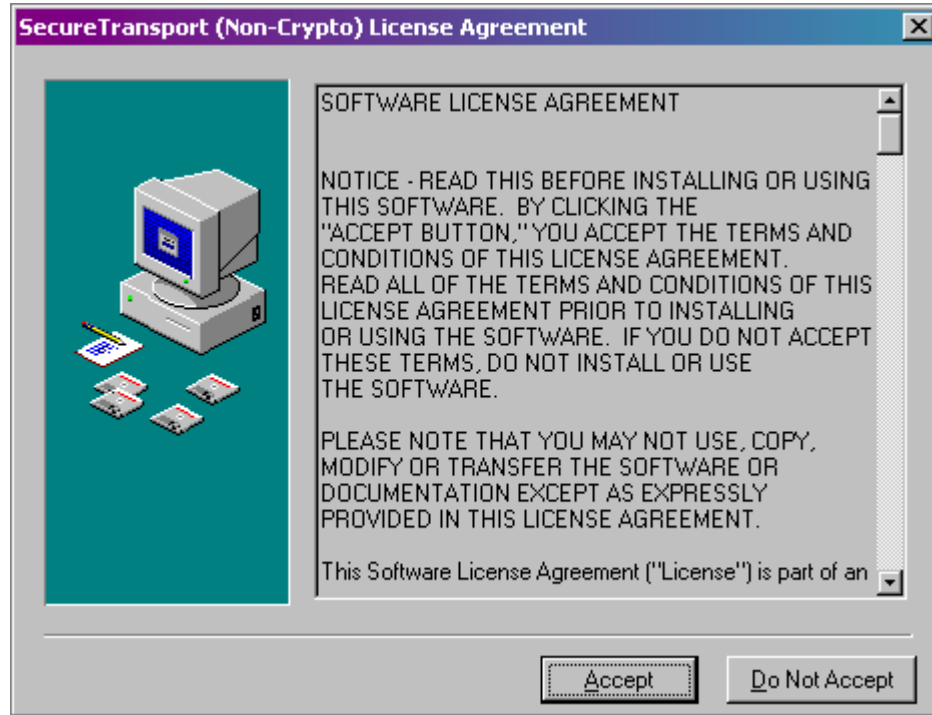
**Click the Next button.**

This application has an uninstall option so you can easily remove it at a later date.



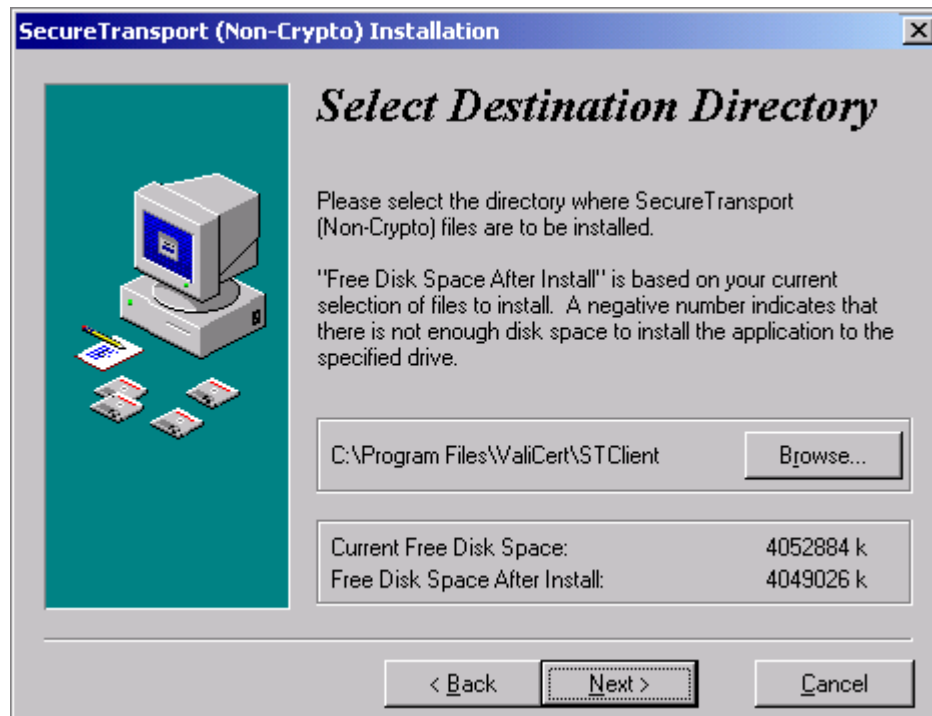
The License Agreement window will open.

**Click the Acept button.**

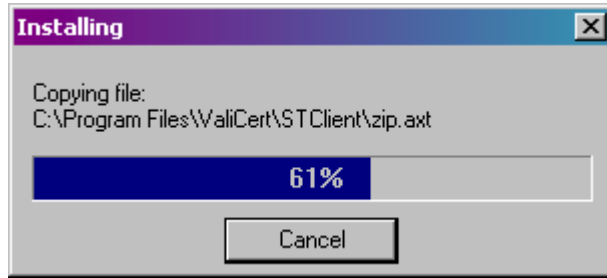


The Select Destination Directory window will open.

**Click the Next> button.**

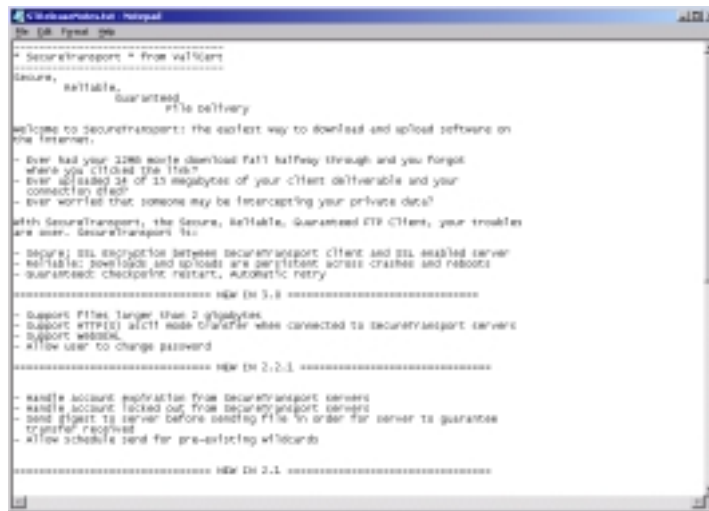


SecureTransport will install automatically.

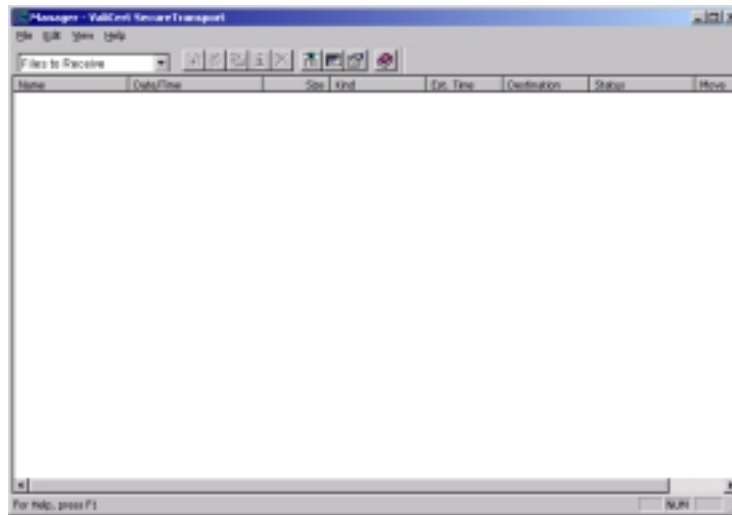


Once the installation is complete, SecureTransport will open the release notes for your review.

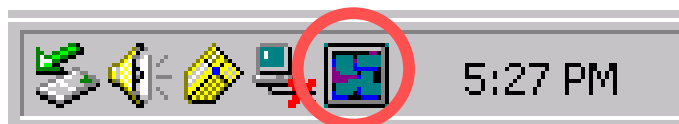
**Close Notepad once you have reviewed the release notes.**



The SecureTransport Manager window also opens automatically once the install is complete.

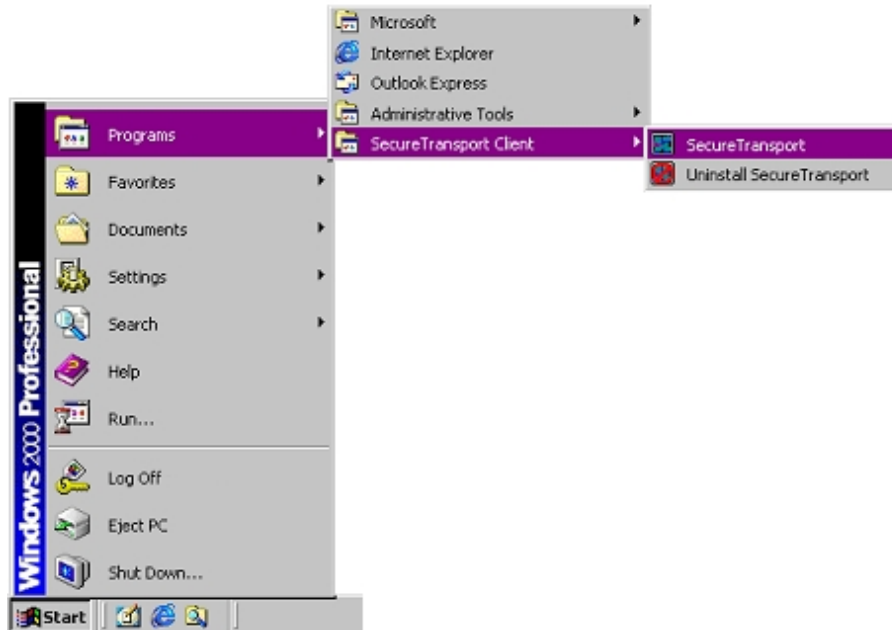


The SecureTransport icon will load in your system tray.



## Configuring SecureTransport

**Click Start →  
Programs →  
SecureTransport  
Client →  
SecureTransport**



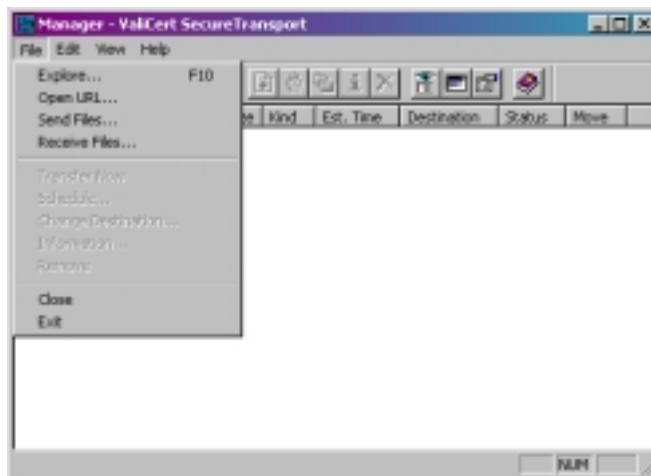
The Progress Window will open.

**Click the  
Manager button**



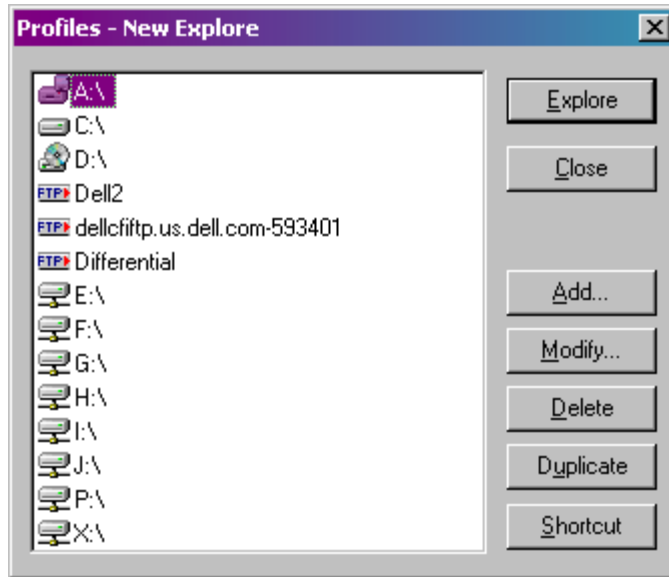
The Manager Window will open.

**Click File →  
Explore**



The “Profiles – New Explore” window will open

**Click the Add button**



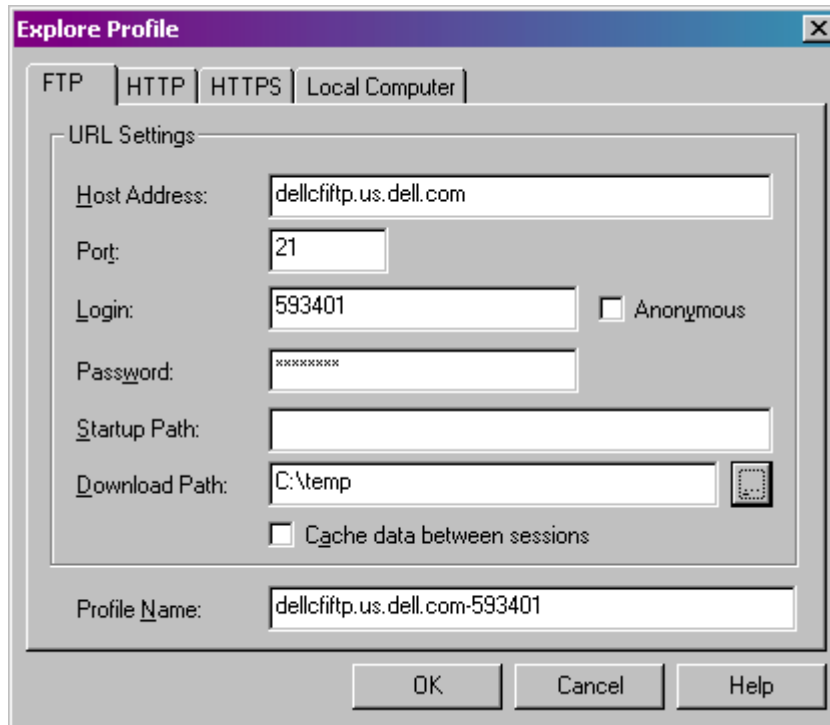
The profile window will open.

**Enter the login information into this screen.**

The login information was emailed to your Technical Contact when the Dell FTP account was created.

NOTE: You will receive a new FTP account for each project that you do with Dell Custom Factory Integration.

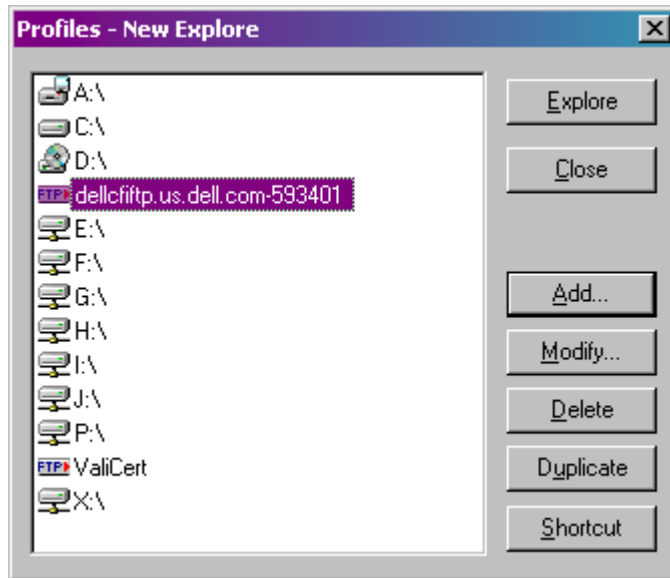
**Click the OK button**



## Uploading Files to Dell

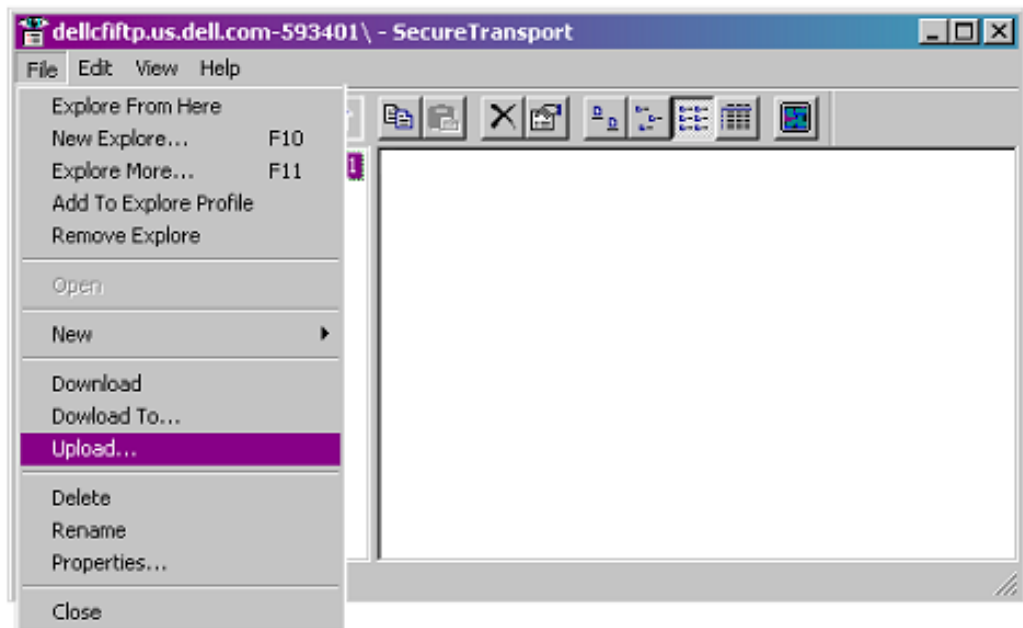
The new Profile that you just set up will appear in the list.

**Highlight the profile and the click Explore button.**



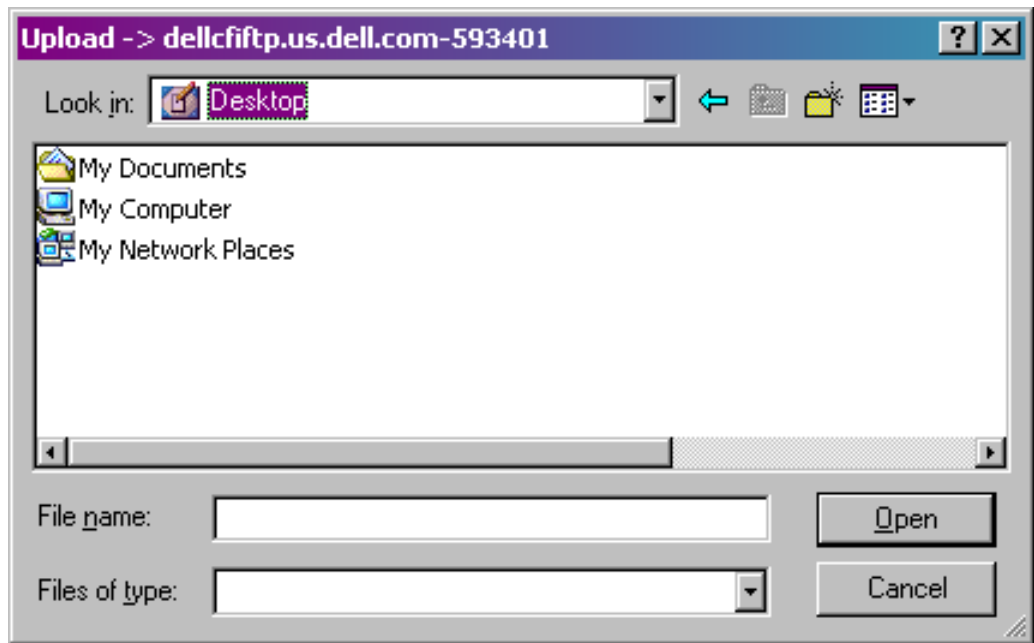
SecureTransport will connect to Dell using the profile settings.

**Click File → Upload**



**Select the file that you would like to send. This will usually be a system image file.**

**NOTE:** Please create an image; do not send the individual files on your hard drive. Call 877-889-7911 with questions.



**Click the Open button**

The Progress Window will indicate file transfer progress.

**Click Cancel when the transfer is complete**

